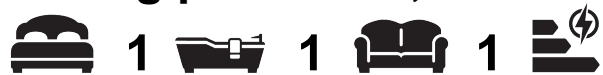




**C702 Bow Green 120 Bow Common Ln, London, E3 4BH**

**Asking price £535,000**





Introducing this excellent one bedroom contract assignment in the soon to complete Bow Green Development by Berkeley Homes. Perfectly located for work, study or play, Bow Green sits at the heart of the Golden Triangle. Formed by The City, Canary Wharf and Stratford, it's an area that's undergone a wave of investment resulting in enhanced transportation and employment opportunities, and increased rental demand.

This apartment features over 595 sqft of internal space and benefits from expansive westerly views.

**\*\*Photos taken are of an example unit for marketing purposes.**

Approximately 999 years remaining on lease

Ground rent amount: Peppercorn

Ground rent review period: N/A

Service charge amount: £4.85 per sqft per annum

Service charge review period: Ask Agent  
Council tax band: Not Yet Available (Tower Hamlets Council)

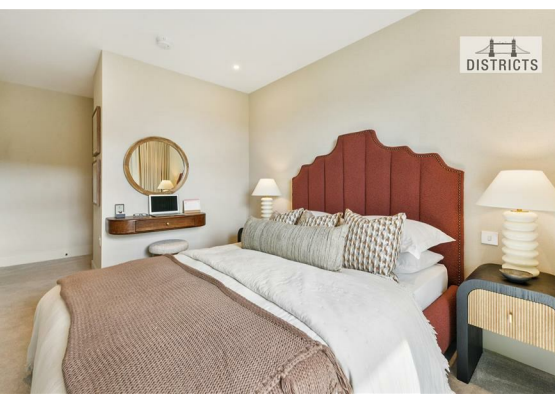
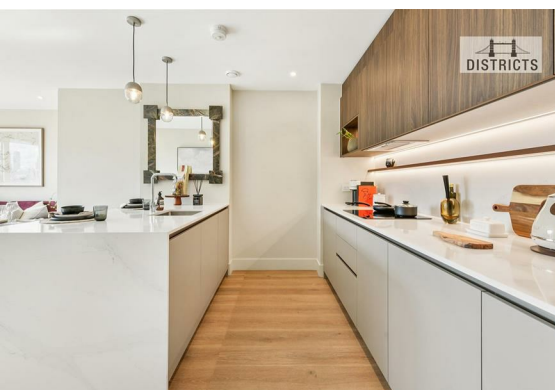
Electricity supply – Mains | Heating & Hot water - Mains | Water supply – Mains | Sewerage – Mains | Internet: FTTP | Lift Access | Parking: No | Cladding: EWS1 Certificate available.

To check broadband and mobile phone coverage please visit Ofcom

To check planning permission please visit Tower Hamlets Council Website, Planning & Building Control







Available  
Price: poa



DIMS	M / FT
Living / Kitchen / Dining	21'9" x 13'0"
Bedroom	13'1" x 11'2"
Balcony	10'10" x 5'9"
INTERNAL AREA	597 SQ FT
EXTERNAL AREA	59 SQ FT

PLANS  
INTERIORS  
MATERIAL CHOICES  
VIEWS  
SPECIFICATION

- ➔ Measurement points
- W Wardrobe
- OW Optional wardrobe
- CC Coat Cupboard
- SC Storage Cupboard
- UC Utility Cupboard
- W/D Washer/Dryer
- ⊕ Optional Pendant Lights

Floorplans shown for Bow Green are for approximate measurements only. Exact layouts and sizes may vary. All measurements may vary within a tolerance of 5%. The dimensions are not intended to be used for carpet sizes, appliance sizes or items of furniture. Furniture layouts are indicative only.

These particulars, whilst believed to be accurate are set out as a general outline only for guidance and do not constitute any part of an offer or contract. Intending purchasers should not rely on them as statements of representation of fact, but must satisfy themselves by inspection or otherwise as to their accuracy. No person in this firm's employment has the authority to make or give any representation or warranty in respect of the property.